



ANNUAL REPORT

2019/2020



WHERE WE ARE NOW

Welcome to our Annual Report for the financial year 2019-2020. As you will see it has been a very positive and busy period. Over the year we saw the continued growth in the organisation's work with several new projects starting alongside our established service areas.

The board of trustees has continued to be pleased with our increased social media presence and the steady growth in both our individual and corporate membership. As we move into our 35th year we continue to be grateful to everyone who has continued to raise funds, in support of our work.

A particular highlight of the year has been the steady development of our Housing Project - WomenCentre Homes. On behalf of the board I would like to thank all staff, volunteers and WomenCentre members for their commitment and investment into the lives of the women/clients we support.

Maura Wilson, Chair

I am very proud to be the CEO of WomenCentre. We are a strong organisation providing quality services that offer a wide range of support, advice and information to address many of the challenges being faced. We recognise for many of the women we support that these will be further compounded by Covid -19, but I am confident that we will face up to this new challenge alongside them, as we have always done, since we began 35 years ago.

Thank you to all the funders of our services especially the Coutts Foundation.

Angela Everson, CEO



CORPORATE SUPPORT

We launched our corporate support packages this year offering Bronze, Silver and Gold packages. We would like to thank Towngate PLC and Makin Dixon Solicitors for becoming our first Gold Corporate Supporters. Suma Foods & Allied Bakers and Food Workers Union have become Bronze Supporters of WomenCentre.

In addition, the wonderful women at XTG Hair Salon in Huddersfield agreed to support us by donating free haircuts to the women at our Huddersfield base.



SOME FANTASTIC FUNDRAISING

Norland Women's Institute invited us to speak at their AGM. A fantastic evening and a very busy WI. We are very proud to have been made their Charity of the year.

Manchester Marathon - One of our members ran the Manchester Marathon and raised over £400 for WomenCentre. We are so proud to have such amazing supporters. In addition her daughters raised over £100 by running a teddy bear stall at Meltham Scarecrow Festival.

ASDA Singing - The WomenCentre Music Group (Huddersfield) and the adult singing group have had 2 events singing at Asda raising £200 towards the second CD. The women have really enjoyed the experience of singing in public.



The Guilty Feminist tour at Victoria Theatre in Halifax. What a fantastic show with very talented feminist comedians and discussions about WomenCentre work. We raised £400 on bucket collections at the door and signed up some new members. Great evening!

NCS Huddersfield and Halifax The young people on the National Citizen Service have been raising awareness of WomenCentre and have raised over £2000 as well as donating a huge amount of toiletries.

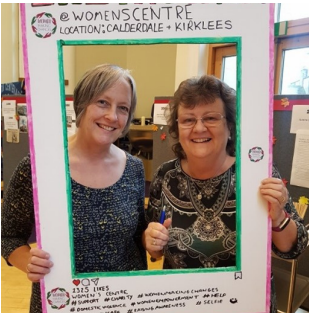
Lloyds Charity Fundraising day - The staff at Lloyds had bucket collections on 31st July at their Halifax office to raise funds for WomenCentre and to encourage staff to be members. Fantastic morning and raised £220. Thank you to all the amazing volunteers.



OVER THE YEAR.....



Housing project update - WomenCentre Homes is gathering momentum and this positive progress will result in taking possession of our first properties within the next few months! Current work includes creating a new charitable company to run the new venture; a bid to fund property refurbishment and new partnerships working with Calderdale Council and Stonewater Housing.



Women Together have been working on an art project called 'Mirrors of Us'. The participatory project used arts-based interventions to support holistic mental health and wellbeing. As well as engaging in physical movement, the group produced a bank of self-portraits and illustrations, poetry and collective group stories, which will form the basis of an exhibition.



Annual General Meeting We held our AGM on 14th October 2019 with WomenCentre members. We had some excellent presentations from some of our projects including: Poetry and digital stories from Sisters Shout, our LGBT Group; the new Liaison and Diversion Project; Connecting Opportunities with Migration Yorkshire; the STAGE project; and an overview from the Housing Project.

Allotment The annual allotment celebration was on 18th December 2019 with Winter Solstice fire, hot chocolate and winter songs and rituals at the allotment.

A cold but beautiful and uplifting event.



35 Years of WomenCentre - This year WomenCentre is celebrating 35 years. We have asked for ideas on what we should do to celebrate together and to think about some wider fundraising. It is a great opportunity to continue to raise our profile with some exciting challenges but it is important to remember why we are here: it is for the vast numbers of women that we continue to support.



Celebrating 25 Years of National Lottery In October we participated in 'Fingers-crossed Selfie Day' to celebrate 25 years of the National Lottery. It was a grant from the National Lottery that enabled us to buy our building in Halifax in 2002 enabling us to offer a wider range of services for women locally. We have received many more significant grants since from the National Lottery.

16 Days of Action 25th November to 10th December.

The 16 Days of Activism against Gender-Based Violence started on the International Day for the Elimination of Violence against women & girls. Over the 16 days we shared messages and statistics from WomenCentre, we encouraged members and businesses to raise awareness and raise funds during this period too.

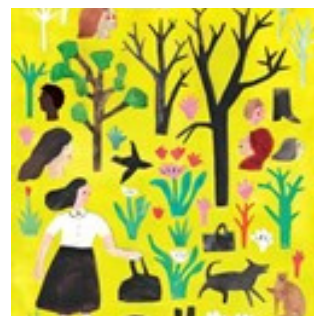


Christmas Donations We were again overwhelmed by the generosity of others at Christmas. We received a large toy & toiletry delivery, as well as donations from many people and organisations. Thank you to everyone involved for the donations and for sorting out all the deliveries and parcels.

INTERNATIONAL WOMENS DAY

#Eachforequal

WomenCentre Cards Louise Lockhart has designed this beautiful card for WomenCentre. Thank you to one of our trustees for making this happen. We are now selling the cards, which are blank, for any occasion, for £1 or a pack of 5 for £4. Get in touch if you would like to order some.



35km for 35 years On Friday 13 March Kate, a former trustee and supporter of WomenCentre marked her 60th birthday weekend and 35 years of Women's Centre by once again doing a lone walk of 35km in a day to help raise much needed unrestricted funds. Kate raised over £3400. Fantastic!



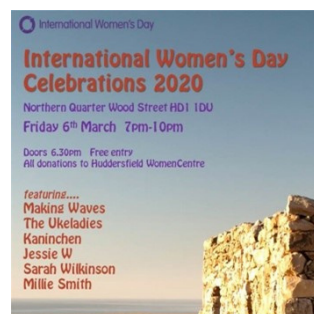
Suma Foods & Allied Bakers and Food Workers Union The wonderful staff at Suma Wholefoods raised £244 and we also signed up new members. Thank you so much.

Staff & Volunteer Conference We had a staff and volunteer away day in early March 2020 and were delighted to be joined by a local poet Katie Atkinson who used our words to produce a couple of poems. The poems really sum up what we are about at WomenCentre. We also created the image on the right of 35 hands for our 35 years linking to the poem 'With You....With Unity'.



International Women's Day Film - Holly Lynch MP presented an International Women's Day screening of 'On The Basis Of Sex'. It was a lovely evening and is now part of our annual IWD celebrations.

Northern Quarter 5th International Women's Day Celebration A fantastic evening of music in Huddersfield with donations to WomenCentre.



The Meandering Bear - Fantastic that the owners and staff at Meandering Bear announced that they are supporting WomenCentre throughout the year. The team also raised £307 on International Women's Day. Thank you all.

Ahmadiyya Muslim Women's Association

Thank you to the amazing women at Ahmadiyya Muslim Women's Association who despite a cancelled event still raised £300. Very much appreciated.



The Wine Barrel in the Piece Hall at Halifax supported WomenCentre this International Women's Day and donated £1 from each cocktail sold. They share women's stories on social media including that of our own CEO Angela Everson. We are so proud to be supported by so many local businesses.

Sound Women Our Annual Sound Women music event was cancelled. However the new CD is available to listen to on our website.
<https://womencentre.org.uk/rough-tracks-for-life>



CALDERDALE

Calderdale StayingSafe. We have continued to offer Safelives accredited Domestic Abuse Services in Calderdale. This year the service received 2,098 referrals for Domestic Abuse support relating to 1,905 individuals (some are repeat referrals). Of these 156 referrals (7%) were already receiving a service. The Calderdale office dealt with 4,386 women who came through the doors in addition to telephone enquiries.



The Calderdale Counselling Service engaged 102 women and offered counselling to 80 on a wide range of issues impacting on their mental, emotional and physical health and wellbeing.

Women Making Changes. WomenCentre in partnership with Christians Together, Age UK, Calderdale and Kirklees Citizens Advice and St Augustine's, supported 98 individual women over the year with a range of complex needs: 76 women worked with us through 1:1 casework and 22 women accessed drop-in support. The Project workers provide a flexible support package working to a jointly agreed action plan with each woman depending on her strengths and needs.

*“Thank you for everything, I wouldn't be
alive without this service”*

Staying Safe
Service user

KIRKLEES

Mental Health and Wellbeing Service The service was re-commissioned by Kirklees Council and both Kirklees NHS Clinical Commissioning Groups for 3 years from April 2019. The team spent the year working hard together with volunteers, women and commissioners to re-shape the service to meet the new service specification, make it more responsive to feedback and to further develop our co-productive working with the Working Together Better Kirklees VCS Mental Health Partnership. This year the service supported 817 individual women, offering a range of services in Huddersfield and Dewsbury, which include: facilitated and peer-led support groups and activity groups; co-produced skills and personal development courses; drop-ins; counselling; creative 1:1 and group therapies.

Syrian Resettlement Programme April to October 2019 offered support to 37 women.

Safer Women funded by a 12-month grant from both Agenda and Mind's distribution of their larger Tampon Tax fund took a women-centred approach to the mental health and wellbeing of women seeking asylum, refugees and new migrants in Kirklees. Eight peers were supported by three staff members to work alongside women accessing our Women in Exile and Women Together groups.

STAGE (Support to Overcome Experiences of Sexual Exploitation) WomenCentre is part of the STAGE Project, that brings together 6 women's sector charities from across the North East & Yorkshire where there are emerging, live and recent sexual exploitation investigations. The project offers support to women, aged 16 + to address and overcome experiences associated with sexual exploitation & grooming using personalised trauma-informed 1:1 and group-based support, to help women achieve their personal goals.

BRADFORD

From April to October '19 WomenCentre continued as contract lead for the commissioned service in Bradford, with our sub-contractors Staying Put and Domestic Violence Services and delivered Bradford Maze the Domestic Abuse Perpetrator Programme. We received 95 referrals and 53 men completed either the 26-week programme or 1-1- work. From October 19 to March '20 WomenCentre formed a new partnership with Staying Put and Family Action to form the Survive and Thrive Consortium delivering the new 'one front door' commissioned service that incorporates all Domestic Abuse services including refuge provision, community support, recovery services, behaviour change and children's services. WomenCentre will deliver Bradford Maze and counselling.

WOMEN CENTRED WORKING CONNECTING OPPORTUNITIES



'Before I joined Connecting Opportunities, there were lots of things I didn't know about myself,.....I feel independent and proud of myself. And that happiness when you get your first wage!'

Women Centred Working is an initiative to encourage and support the design and delivery of more effective services for women who are facing multiple disadvantages. It was developed as part of WomenCentre's work with Connecting Opportunities and women migrants. In June 2019 we launched a Special Edition report: Applying Women Centred Principles. The fourth in the Women Centred Working series, this report showcases the success of the women centred approach and offers six recommended principles of women centred working that emerged through cooperation with Connecting Opportunities partners. The principles are intended to bring about change that can transform the quality of life and opportunities of women migrants, who so often face severe and multiple disadvantages.

LIAISON & DIVERSION

WomenCentre has been working as part of the West Yorkshire All Age Liaison and Diversion Service led by Wakefield Council with two WomenCentre staff seconded to multi-agency teams and offering gender specific approaches in Calderdale and Kirklees.

PROJECT 1325

Our young women and girls project 1325 (working across Kirklees and Calderdale) went on a two day residential to the Women's holiday home in Horton in Ribblesdale. On the first day the young women settled into their surroundings and familiarised themselves with each other, creating new friendships and enjoying some free time. The second day 7 young women and 3 members of WomenCentre staff climbed Pen-Y-Ghent overcoming all weather conditions and their own personal challenges. This was finished off with a movie night and time to chill. A fabulous time was had by all, with lots of learning, self reflection, team work and an improvement in emotional wellbeing and sense of self-worth. In March 2019 the National Lottery confirmed the funding to continue this work for a further 3 years.



SOCIAL MEDIA & FUNDRAISING

Membership

Over the year membership has been growing, we would love for this to continue. If every member could introduce just 1 more member that would increase our unrestricted funds by £3000 per year. Remember - **if every women in Calderdale and Kirklees was a member, we would never need funding again.**

<https://bit.ly/WomenCentreMember>

Fundraising

We encourage groups and individuals to hold fundraising events, activities and sponsored walks, we would love for you to get involved, particularly as it is our 35th year.

<https://bit.ly/WCFundraising>

Corporate Support

We are now on LinkedIn and networking with local business more and more. If you are interested in joining our growing number of Corporate supporters, please see our website.

<http://bit.ly/WCCorporate>

Leaving a gift in your will

Did you know you could leave us a gift in your will after you have looked after your loved ones? It can make a huge difference and help us to support local women into the future.

<https://womenscentre.org.uk/legacy/>

Twitter
Followers

1,551

Facebook
Followers

2,372

LinkedIn

163
CONNECTIONS

Reach
Retweets

50K

Members

303

Can I say how impressed I was with the response from Calderdale Staying Safe, at WomenCentre, it was just fantastic!

GP Surgery

4,386

women through the
door this year at
our Halifax
office

215

Women
were seen by
WomenCentre
WY Liaison &
Diversion
Workers

2,098

Referrals for
domestic abuse
service

4,882

Hours donated by
66 volunteers
across
WomenCentre
Services

177

Women
were referred for
Counselling

817

Women
supported by
Women's Mental
Health Service
Kirklees

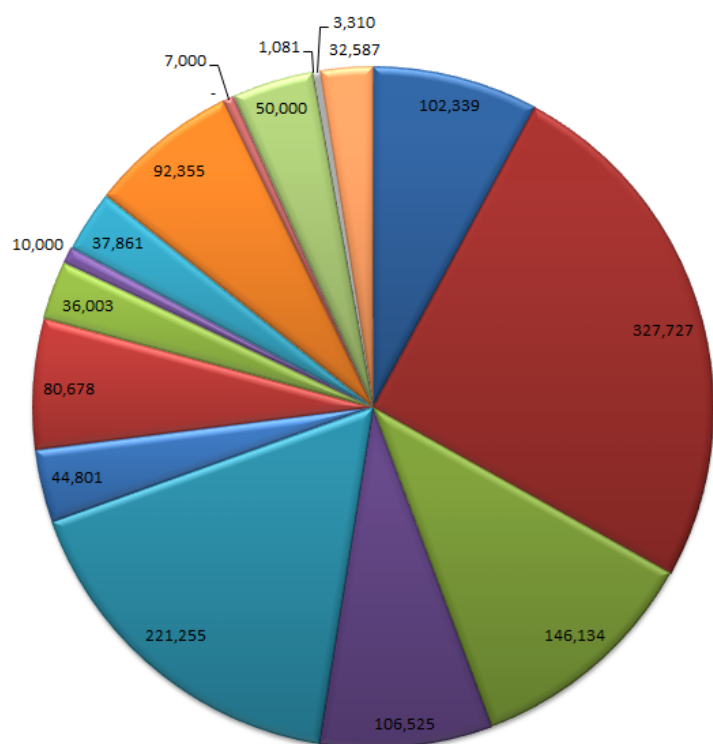
297

Individual girls
accessed Project
1325 over 3 years
7 months

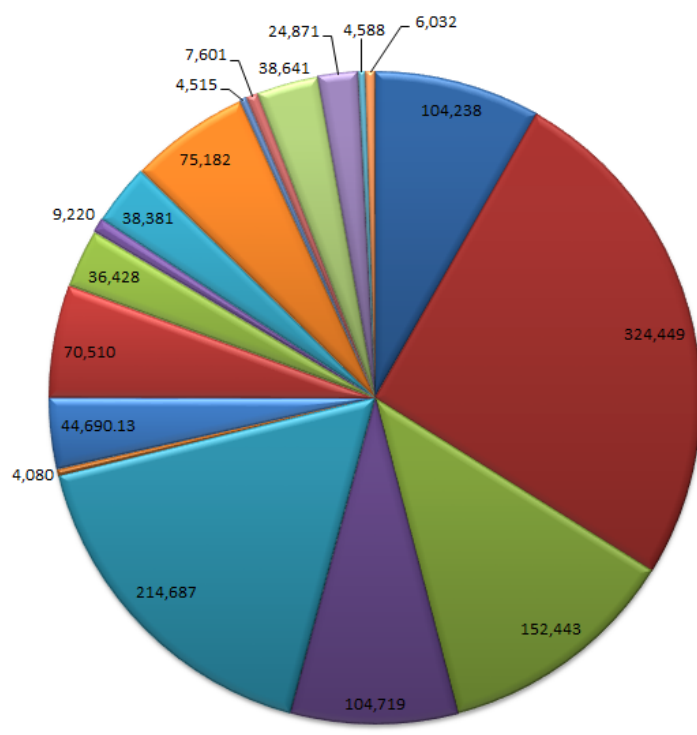


Finance - an overview

INCOME 19/20



EXPENDITURE 19/20



- BRADFORD MAZE DOMESTIC ABUSE PREVENTION & COUNSELLING
- CALDERDALE STAYING SAFE & ADVANCED PRACTITIONER
- 1325 BIG LOTTERY GIRLS & YOUNG WOMEN
- WOMEN MAKING CHANGES BIG LOTTERY PROJECT FOR WOMEN IN CRISIS
- WOMEN'S MENTAL HEALTH & WELLBEING PROJECT
- OTHER DOMESTIC ABUSE SUPPORT SERVICES
- OTHER WOMEN'S MENTAL HEALTH & WELL BEING SERVICES
- LIAISON & DIVERSION SERVICE
- STAGE (SUPPORT FOR THOSE WHO HAVE EXPERIENCED SEXUAL EXPLOITATION)
- OTHER WOMEN'S SUPPORT SERVICES
- MIGRATION YORKSHIRE
- HOUSING DEVELOPMENT PROJECT
- LEARNING & WELLBEING CALDERDALE
- SMALL GRANTS FOR WOMEN
- COMMUNICATIONS AND CORE COSTS FUNDED BY TRUSTS
- DEVELOPMENT OF VIDEO LINK ROOM & OTHER CAPITAL
- CONSULTANCY & TRAINING
- OTHER UNRESTRICTED INCOME

- BRADFORD MAZE DOMESTIC ABUSE PREVENTION & COUNSELLING
- CALDERDALE STAYING SAFE & ADVANCED PRACTITIONER
- 1325 BIG LOTTERY GIRLS & YOUNG WOMEN
- WOMEN MAKING CHANGES BIG LOTTERY PROJECT FOR WOMEN IN CRISIS
- WOMEN'S MENTAL HEALTH & WELLBEING PROJECT
- OTHER DOMESTIC ABUSE SUPPORT SERVICES
- OTHER WOMEN'S MENTAL HEALTH & WELL BEING SERVICES
- LIAISON & DIVERSION SERVICE
- STAGE
- OTHER WOMEN'S SUPPORT SERVICES
- MIGRATION YORKSHIRE
- HOUSING DEVELOPMENT PROJECT
- LEARNING & WELLBEING CALDERDALE
- SMALL GRANTS FOR WOMEN
- COMMUNICATIONS AND CORE COSTS FUNDED BY TRUSTS
- DEVELOPMENT OF VIDEO LINK ROOM & OTHER CAPITAL
- CONSULTANCY & TRAINING
- OTHER UNRESTRICTED INCOME



With you, With unity. By Katie Atkinson

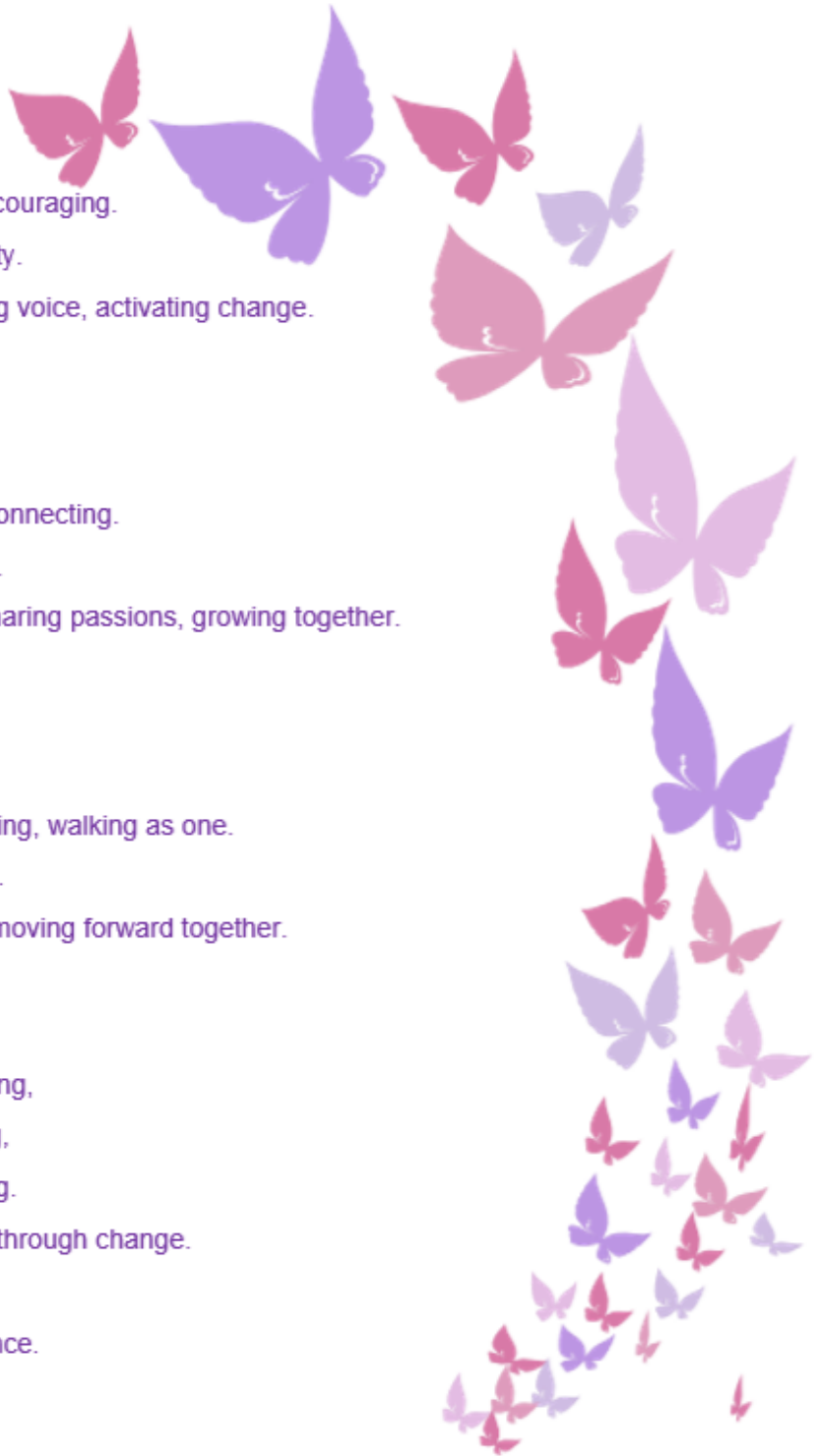
In resilience,
We are here.
Evolving, adapting, encouraging.
Our community is safety.
Belonging, empowering voice, activating change.

In courage,
We are here.
Together, belonging, connecting.
Our community is trust.
Championing rights, sharing passions, growing together.

In empathy,
We are here.
Challenging, encouraging, walking as one.
Our community is truth.
Welcoming, listening, moving forward together.

Growing, Rising,
Developing, Empowering,
Supporting, Influencing,
Encouraging, Impacting.
Our community grows through change.

We are here, in resilience.
We are here, in love.
We are here, in unity.



“Thank you, for everything, I am so grateful
for the service, I have put up with so much
for so long, I feel safer and happier.”



23 Silver Street, Halifax HX1 1JN Tel: 01422 386500
 15 Lord Street, Huddersfield, HD1 1QB Tel: 01484 450866
 First Floor, Empire House, Dewsbury,
 WF12 8DJ Tel: 07590445846
info@womenscentre.org.uk
www.womenscentre.co.uk



Charity Number 1118366
 Company Number 06084795



Calderdale Clinical Commissioning Group
 Greater Huddersfield Clinical Commissioning Group
 North Kirklees Clinical Commissioning Group



Airedale, Wharfedale and Craven Clinical Commissioning Group
 Bradford City Clinical Commissioning Group
 Bradford Districts Clinical Commissioning Group

