

WOMENCENTRE ANNUAL REPORT 2020/21



women Centre

CHAIRPERSON'S STATEMENT

Welcome to our Annual Report for the financial year 2020 -2021. I think it is safe to say that it has been a year like no other! We continue to be acutely aware of the challenges that will be faced within the organisation because of the Covid -19 pandemic and as an organisation we will not be complacent as we move forwards.

Despite the Covid-19 pandemic the work of the organisation has continued to grow over the year with some additional funding being received from a range of Covid emergency funds locally and nationally.

Our social media presence has remained strong throughout the year enabling WomenCentre to continue to bring in unrestricted funding in support of our work.

The WomenCentre Homes Charitable Company was launched in April 2020 and in December our first two properties were let to women that we are supporting.

I would like to thank all staff and volunteers for the commitment and investment into the lives of the women /clients we support through the many services at WomenCentre.

MAURA WILSON
CHAIRPERSON

To say that the last 12 months have been even more challenging than ever before for WomenCentre would be an understatement. Covid-19 hit the voluntary and community sector hard. WomenCentre has been able to offer our services responsively, flexibly, and innovatively in what was a very fast changing environment, although we and the women we support have very much missed face to face working.

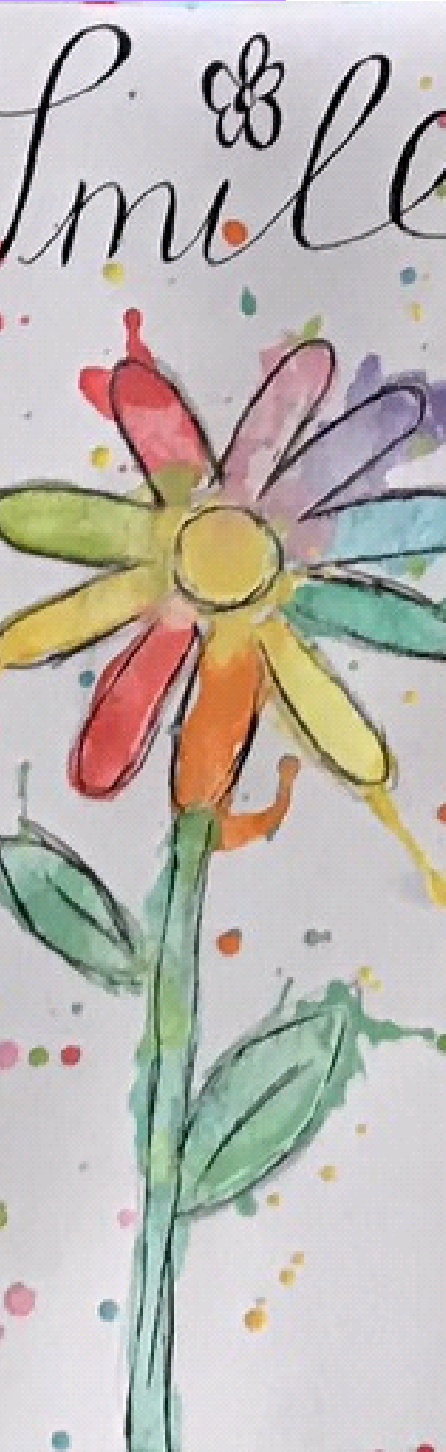
Staff and volunteers went out to women who could not come to us, delivering food parcels, money for gas and electric, clothing, toiletries, and support, safely, to their doors.

We recognised the new stresses and vulnerabilities emerging for the women we support and made changes where necessary to better support them.

This report brings together information about our services and all the art work has been created by the women we support.

ANGELA EVERSON
CHIEF EXECUTIVE OFFICER

THE ARTWORK IN THIS ANNUAL REPORT HAS BEEN CREATED BY WOMEN USING OUR SERVICES THROUGH LOCKDOWN



THE YEAR AT A GLANCE

LOCKDOWN

We started the year in lockdown and we overcame the obstacles and rose to the challenge to support women as much as possible. For the most part we enabled staff to work at home and did not need to furlough any staff. A very welcome grant from the **Coutts Foundation** enabled WomenCentre to upgrade our organisational IT. To facilitate this other grants for laptops and phones were also welcomed from a range of local and national funders and we could not have managed without this support. Services continued via telephone support including accepting referrals to all our services. Group work, yoga and the Freedom Programme all continued online and on the telephone.

NATIONALLY

We were able to take part in virtual meetings with national organisations such as Safelives, Respect, Survivors Trust, Agenda and local partners across Kirklees, Calderdale and Bradford. We shared national and local advice numbers for domestic abuse and mental health, amongst others.

VOLUNTEERS CONTINUED TO SUPPORT OUR WORK

Volunteers are integral to our work and have continued to be during lockdown. In June we celebrated volunteers week thanking everyone on social media.

MENTAL HEALTH AWARENESS WEEK

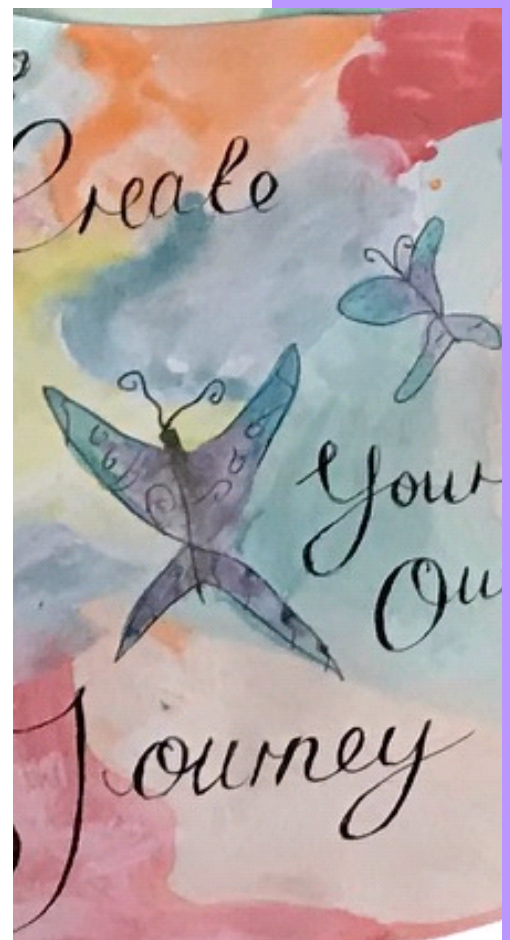
The theme in 2020 was #KindnessMatters. Women shared a selection of paintings, poems, recipes and kinds words to express how important kindness was and how united we were during lockdown.

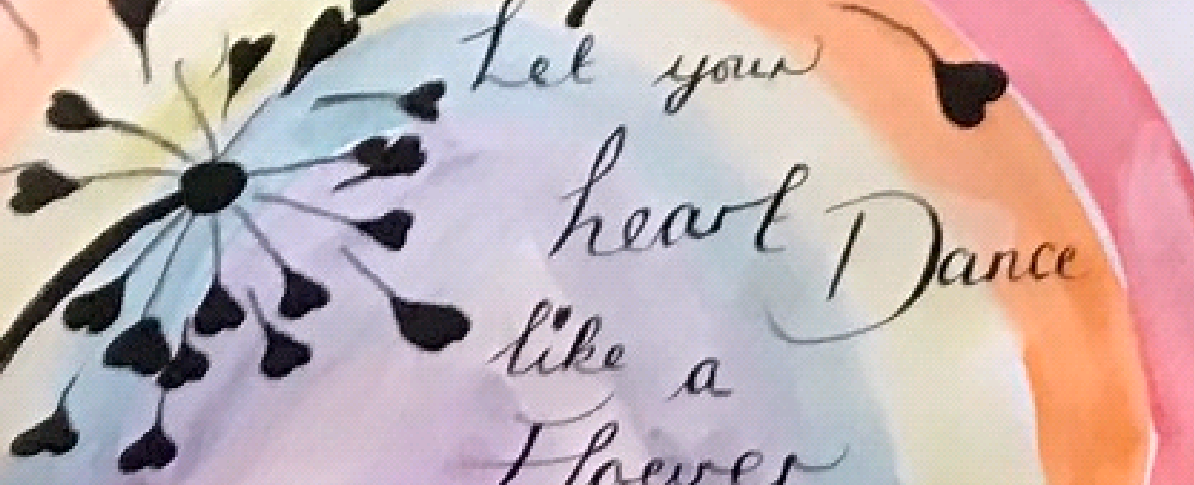
WOMENS MENTAL HEALTH & WELLBEING FACEBOOK

Our Kirklees team launched a new Facebook page posting creative and motivational work and videos to support women during the pandemic.

STAYING SAFE - CALDERDALE

The Freedom Programme was re-designed as an online course with slightly shorter sessions via zoom. We found this increased accessibility, and for some this was a preferred approach.





Your calls are one of the best things in my week. It's really good to know that someone else cares about me.



...AT A GLANCE CONTINUED:

ANNUAL GENERAL MEETING

In October we had our AGM via zoom for the first time, which was well attended. It was great to see so many faces. We updated members on the Housing Project and the annual report and accounts were presented and accepted.

LOCKDOWN DONATIONS

During this year our members and supporters have been extremely generous and we have received more donations than usual. At Christmas we received donations and funds to buy gifts from the **Rotary Halifax, JCI, Tesco's Halifax, Argos, Revoplas** to name just a few.

CORPORATE SUPPORT

A special thanks to our corporate supporters who have been really supportive during lockdown with extra support and donations. **Towngate PLC, Parker Hannifin, Suma, Full Circle Funeral Care, Stowe Family Law, Freight Link Europe, Bakers, Food and Allied Workers Union.**

COMMUNITY SPIRIT AWARDS

In November WomenCentre attended the Calderdale Community Spirit Awards live on YouTube with the Community Foundation for Calderdale. Angela was awarded the 'Lifetime Achievement Award' for her years of dedication to the voluntary sector in Calderdale. Angela said that it was a team effort and thanked all the staff, supporters, board members, volunteers, friends and her family. She also thanked the Community Foundation for Calderdale and the women who come forward for support. It was an inspirational evening.



.....MORE OF OUR YEAR

A#16DAYS #ORANGETHEWORLD

The 16 Days of Activism against Gender-Based Violence is an annual international campaign that kicks off on 25 November, with the International Day for the Elimination of Violence against Women, and runs until 10 December, Human Rights Day. In 2020 the global theme was: "Orange the World: Fund, Respond, Prevent, Collect!" We shared facts and figures and women's comments and asked people to support their local WomenCentre by donating, being a member or fundraising. It is important that we always use this time to raise awareness.

ROUGH TRACKS FOR LIFE VOL 2

We released our second CD Rough Tracks for life Volume 2. Women in Kirklees have embraced song writing as a creative form and an expressive outlet and created some incredible results. Recording this album is part of a process that spans exploring emotions, rekindling creative energy, finding courage and proudly putting songs into the public domain. <https://bit.ly/WCRoughTracks>

MEMBERSHIP FEE

We carried out a survey monkey amongst our membership to look at the membership fee and to ask how people felt about an increase. We had over 80 responses and people were happy to pay more. There will be final agreement at the AGM in 2021, on the changes to the annual fees.

CONCERNS FOR WOMEN'S SAFETY

In March, following the tragic death of Sarah Everard, as an organisation we too were saying 'enough is enough'. We will continue to work with like-minded organisations to ensure that women's voices continue to be heard. We have contributed to the Violence Against Women and Girls consultation as well as contributing to the national changes to the Domestic Abuse Bill.

CARDS

Our beautiful cards designed by Lucy Lockhart are still available at £1 each or 5 for £4.



They know what they are dealing with here, they have so much empathy here, I would recommend this place to absolutely everyone, I tell everyone.

INTERNATIONAL WOMEN'S DAY

#CHOOSETOCHALLENGE

We received a lot of support this year for International Women's Day. Here is a small sample of the work that took place.

AN EVENING WITH SALLY WAINWRIGHT

Hosted by Holly Lynch MP instead of our usual movie. Holly interviewed Sally Wainwright with over 300 attendees from all over the world raising an astounding £3,260 in aid of WomenCentre. A fantastic and fascinating evening.



“ *Helped me to be listened to with no bias and opinions.
Helped me realise I deserve to be treated better.* ”



SOUND WOMEN ONLINE FESTIVAL

The music festival was a great success online this year. Lisa Luxx joined us from Beirut and Holly Macve from Brighton. 62 women attended the uplifting evening of poetry, music, words and dance.

FULL CIRCLE FUNERAL CARE

Raised over £2k and supplied WomenCentre with 100 backpacks filled with essentials for women.

LITTLE MISS ELECTRICAL

Launched their branded hoodies and donated £7 per jumper to WomenCentre.



SUMA FOODS

Held a zoom quiz and raised over £200. They also produced a vegan cooking video to support us at WomenCentre.

DONATIONS

We received donations from some amazing local businesses including Parker Hannifen, Arcade Coffee and Food in Huddersfield, Todmorden Arts Group, Soroptomists, Norland WI and more.



WOMENCENTRE SERVICES CALDERDALE

Calderdale Staying Safe Domestic Abuse Support Service

The service received 1933 referrals for DA support. Of these referrals, 901 engaged with 437 having 1-1 casework and 464 receiving initial advice and guidance. Additional funding was also received from wider Covid-19 funds.

Support was provided by phone and via virtual platforms with some continuation of face-to-face work when it was safe to do so both in the community and out of the WomenCentre base in Calderdale. At the start of the pandemic there was a sharp increase in victims needing refuge accommodation because other options, for example, to move in with family and friends, were not always available because of the national lockdown. The team attended the DA Hub each weekday via a virtual platform with the court IDVA continuing to support victims at courts in West Yorkshire throughout the year.

The team also provided a range of briefings and training around domestic abuse for a wide range of multi-agency frontline workers via online platforms.

Counselling (Calderdale)

179 referrals were received by the service and a total of 83 clients received counselling during the year including some brought forward from the previous year. Most of the referrals were received directly from within WomenCentre's internal services or directly into the counselling service as self-referrals.

The Women Making Changes (WMC) Project, funded by the National Lottery's Help Through Crisis grant worked with 99 individual women in its final year. The project workers continued to provide flexible support packages despite Covid-19. Women still required support with a wide range of issues and digital poverty was very apparent as they struggled at home to help their children with their online education and to connect with wider support. Sarah E. Frost Associates the independent evaluators will complete their final report in June/July 2021.

PROJECT 1325 (CALDERDALE & KIRKLEES)

Project 1325 finished at the end of June 2020. The final evaluation report by the University of Huddersfield is now available on the WomenCentre website and it noted that the issues faced by the women and girls were dominated by often complex mental health issues including anxiety, depression, panic attacks, suicidal ideation, self-harm, and post-traumatic stress.

The impact of this work and the evidence collected led to a successful bid for a further 3 years' funding to further develop the service and to work with 11- to 25-year-olds. The new service started in July 2020, funded by the National Lottery Community Fund and 36 individuals engaged aged 11 – 25 and 25 accessed 1:1 casework with referrals continuing to come from other funders.

KIRKLEES

Mental Health and Wellbeing Service

Over the year a range of telephone and online interventions with some activities also undertaken outside were offered. This service supported 538 individual women. A Creative Arts Facebook space for online therapeutic arts activities was developed. Women came together to create songs, sew & knit, enjoy guided dance, movement therapy, yoga etc.

The STAGE Project continued to help women, to address and overcome experiences associated with sexual exploitation and grooming. Our case worker provided personalised trauma-informed 1:1 help. 5 national briefing papers shining a light on women's experiences during or after sexual exploitation were shared with the national STAGE influencing group.

This service offer was increased and extended with funding from Kirklees MBC to offer both frontline support work and some therapeutic interventions.

Kirklees MBC provided funding at the end of the financial year for a two-year Menopause Project that will run from 2021-2023.

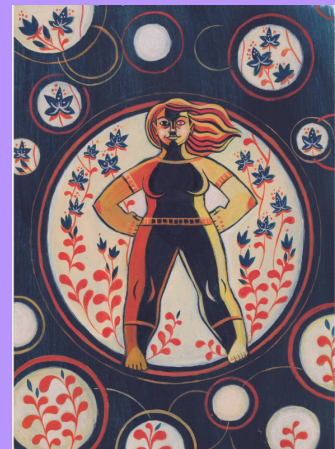
One Community Kirklees, provided a grant to set up a low cost private counselling service. WomenCentre worked alongside the Moonlight Trust to offer wellbeing, learning/personal development.

We have continued to work with Creative Minds a charity hosted by South West Yorkshire NHS Foundation Trust. We produced a creative project working with women during lockdown.

MOTHERS APART - COMMON THREADS COLLECTIVE

We have revisited Mothers Apart – Life in the Goldfish Bowl. An exhibition of the work is now on the website.

In March we launched 'I had to dig deep' the illustrated special edition by the WomenCentre's Mothers Apart - Common Threads Collective which explores mothers' lived experiences of separation from their children during the pandemic 'Truly moving and inspirational.'



BRADFORD

2020-2021 saw the end of the first year of the Survive and Thrive Partnership with Staying Put, Family Action and WomenCentre.

WomenCentre delivers Bradford Maze Behaviour Change Perpetrator Programme and the counselling service. The services were offered by telephone and on line and the Bradford Maze received 416 referrals and the counselling 356.

The Office of the Police and Crime Commissioner via the Home Officer awarded funding to develop a culturally sensitive behaviour change programme for the South Asian community. During the year we also achieved RESPECT Level 2 accreditation that quality assures our work with perpetrators of Domestic Abuse.

WOMENCENTRE HOMES

WomenCentre has started to deliver housing to women. In April 2020 WomenCentre Homes was registered as a charitable company. The new charity has a board of 6 directors. We now have 3 properties bought with a secured loan from the Community Foundation for Calderdale with a fourth leased from Stonewater Housing Association. With thanks to our other funders including Land Aid.



We continue to be involved with the Survive and Thrive Network, managed by Preston Road Women's Centre, which is supporting several other women's organisations in developing their property portfolios.

WEST YORKSHIRE ALL AGE LIAISON AND DIVERSION SERVICE

WomenCentre has continued to have two seconded staff working with women referred into this service. Over the year 215 women were supported across Calderdale (70) and Kirklees (145).

DIGITAL WAYS OF WOMEN CENTRED WORKING: CONNECTING OPPORTUNITIES



During the pandemic, the stakes are high for women migrants. WomenCentre developed digital ways of women centred working, based on lived experiences and contributions from women migrants who were working, studying, volunteering and learning on Connecting Opportunities. Our specific focus emerges from some of the challenges the pandemic and policy responses present for women migrants by adapting and developing women centred working with women migrants for digital spaces.



Online creative methods, underpinned by women centred principles, can enhance organisations that support women migrants as well as improve the lives of women migrants. It is likely that some elements of remote working and digital service delivery are here to stay, so we consider digital adaptation a vital way forward for women centred working with women migrants for lockdowns and beyond. The report will be launched in July 2021.

SOME 2020-2021 STATISTICS

539

Kirklees Mental Health Service
women supported online/phone
(groups, courses, walks) &
counselling

99

women supported
by Women Making
Changes Project

**Calderdale Staying
Safe Domestic Abuse**
900 individuals
offered casework &
advice & guidance

206

individuals receiving
counselling in Bradford

83

individuals receiving
counselling in
Calderdale

297

Individual young women 13-25
supported by the 3.5 year
Project 1325 across Calderdale
& Kirklees
**79% had mental
health needs**

36

Individuals
supported by
Project 1125 across
Calderdale &
Kirklees

215

West Yorkshire All
Age Liaison and
Diversion Service

SOCIAL MEDIA

340

We are now up to 340 members.

2,497

We have 2,497 twitter followers with over
11K impressions.

1,950

Facebook followers is at 1.9K with a post
reach of 5K.

239

On LinkedIn we have now got 239
connections.

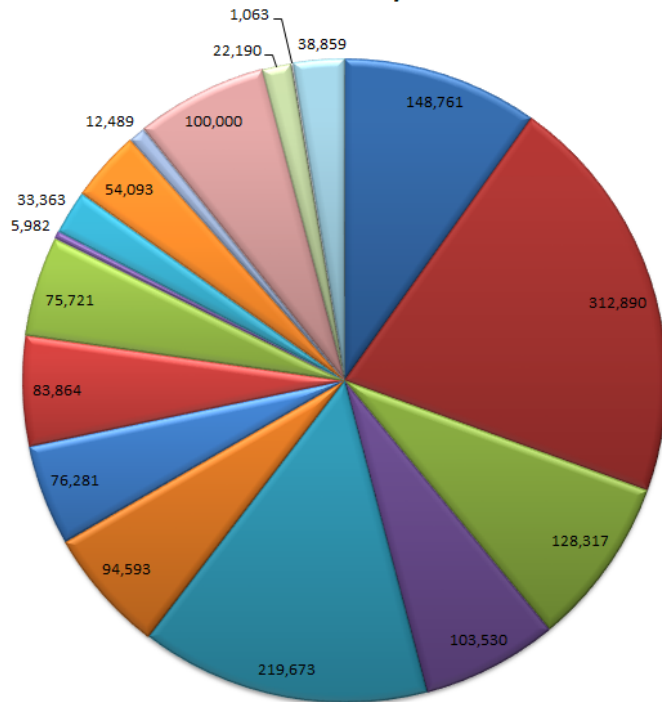
270

The new WomenCentre Instagram page has
270 followers.



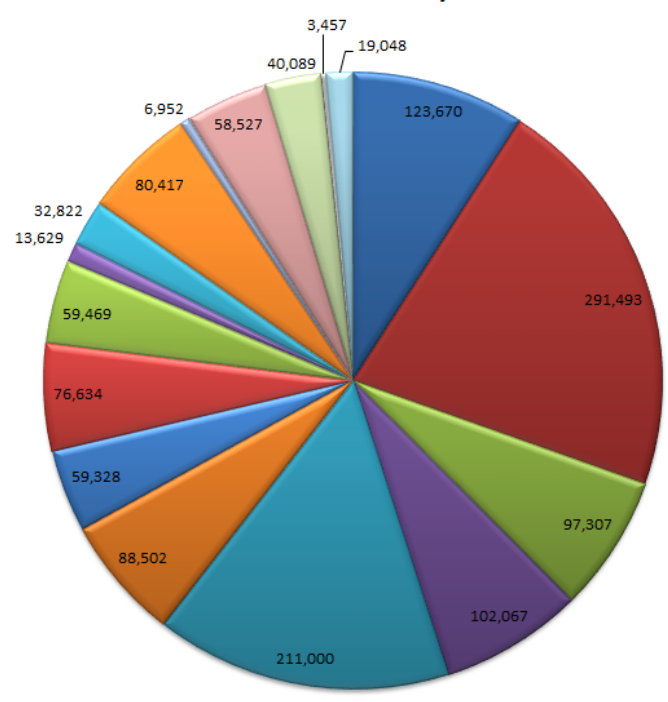
FINANCE

INCOME 20/21



- BRADFORD MAZE DOMESTIC ABUSE PREVENTION & COUNSELLING
- CALDERDALE STAYING SAFE & ADVANCED PRACTITIONER
- 1325 BIG LOTTERY GIRLS & YOUNG WOMEN
- WOMEN MAKING CHANGES BIG LOTTERY PROJECT FOR WOMEN IN CRISIS
- WOMEN'S MENTAL HEALTH & WELLBEING PROJECT
- OTHER DOMESTIC ABUSE SUPPORT SERVICES
- OTHER WOMEN'S MENTAL HEALTH & WELL BEING SERVICES
- LIAISON & DIVERSION SERVICE
- STAGE (SUPPORT FOR THOSE WHO HAVE EXPERIENCED SEXUAL EXPLOITATION)
- OTHER WOMEN'S SUPPORT SERVICES
- MIGRATION YORKSHIRE
- HOUSING DEVELOPMENT PROJECT
- SMALL GRANTS FOR WOMEN
- COMMUNICATIONS, REPAIRS AND CORE COSTS FUNDED BY TRUSTS
- VIDEO LINK ROOM, IT & OTHER CAPITAL
- CONSULTANCY & TRAINING
- OTHER UNRESTRICTED INCOME

EXPENDITURE 20/21



- BRADFORD MAZE DOMESTIC ABUSE PREVENTION & COUNSELLING
- CALDERDALE STAYING SAFE & ADVANCED PRACTITIONER
- 1325 BIG LOTTERY GIRLS & YOUNG WOMEN
- WOMEN MAKING CHANGES BIG LOTTERY PROJECT FOR WOMEN IN CRISIS
- WOMEN'S MENTAL HEALTH & WELLBEING PROJECT
- OTHER DOMESTIC ABUSE SUPPORT SERVICES
- OTHER WOMEN'S MENTAL HEALTH & WELL BEING SERVICES
- LIAISON & DIVERSION SERVICE
- STAGE
- OTHER WOMEN'S SUPPORT SERVICES
- MIGRATION YORKSHIRE
- HOUSING DEVELOPMENT PROJECT
- SMALL GRANTS FOR WOMEN
- COMMUNICATIONS, REPAIRS AND CORE COSTS FUNDED BY TRUSTS
- VIDEO LINK ROOM, IT & OTHER CAPITAL
- CONSULTANCY & TRAINING
- OTHER UNRESTRICTED INCOME

2021-2022

WomenCentre will be able to continue to deliver most of our current services in the knowledge that the funding remains secure over the next financial year. We are also looking forward to continuing to grow our membership, promoting our work via social media and developing our WomenCentre Homes Housing Project.

23 Silver Street, Halifax HX1 1JN Tel: 01422 386500
15 Lord Street, Huddersfield, HD1 1QB Tel: 01484 450866
First Floor, Empire House, Dewsbury,
WF12 8DJ Tel: 07590445846
info@womenscentre.org.uk
www.womenscentre.co.uk

Charity Number 1118366
Company Number 06084795

